

Understanding Foundations

Buildings used to be constructed over cellars. Cellars were dank, dark places where coal was stored. People never intended to live in cellars. Now we have things called basements that have pool tables, media centers and play rooms.

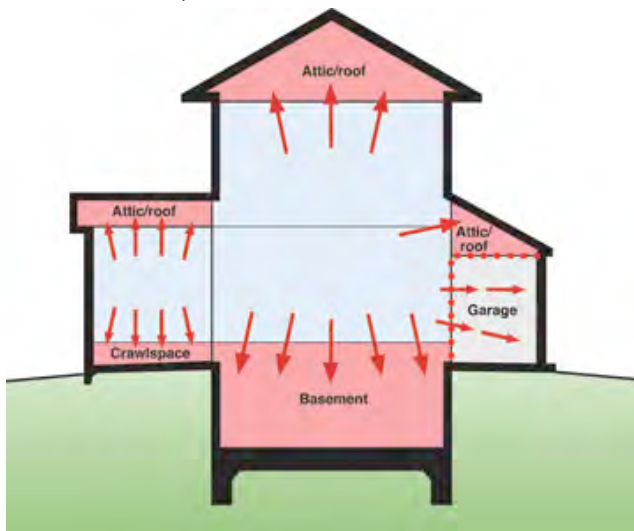
Cellars were easy to construct – rubble, stone, bricks and sometimes block. If they got wet or were damp so what? Basements are different. They are not easy to construct if we intend to live in them. They need to be dry, comfortable and keep contaminants out.

Over the last 50 years there has been a notable expansion of living space. The useful conditioned space of building enclosures is expanding to the outer edge of the building skin (Figure 1). Attics, crawlspaces, garages and basements are valuable real estate that are being used to live in or used for storage or places to locate mechanical systems. Basements are viewed by many as cheap space that can easily be incorporated into a home. Keeping basements dry, comfortable and contaminant free is proving to be anything but.

Figure 1

Expansion of Conditioned Space

- Conditioned space boundaries moving towards exterior surfaces of building
- Garage isolated from house by air barrier/pressure boundary
- Garage ventilated and conditioned independently of rest of conditioned spaces



Keeping the Groundwater and Contaminants Out

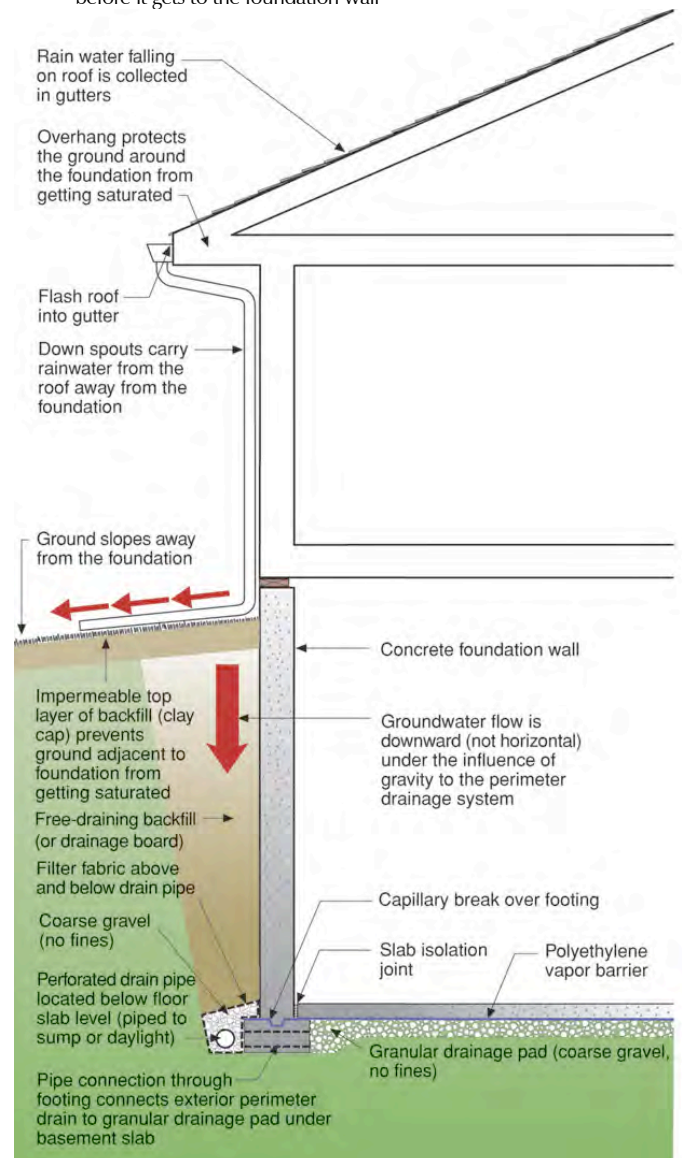
The fundamentals of groundwater control date back to the time of the Romans: drain the site and drain the ground. Today that means collecting the run

off from roofs and building surfaces using gutters and draining the water away from foundation perimeters. Roof and façade water should not saturate the ground beside foundations. Grade should slope away from building perimeters and an impermeable layer should cover the ground adjacent buildings (Figure 2).

Figure 2

Traditional Approach to Foundation Water Control

- Keep rainwater away from the foundation perimeter
- Drain groundwater away in sub-grade perimeter footing drains before it gets to the foundation wall



A free draining layer of backfill material or some other provision for drainage such as a drainage board or drainage mat should be used to direct penetrating groundwater downward to

a perimeter drain. The perimeter drain should be located exterior to the foundation and wrapped completely in a geotextile (“filter fabric”). A granular drainage pad under the foundation slab should be connected through the footings to the perimeter drain to provide drainage redundancy and to provide a temporary reservoir for high groundwater loading during downpours if sump pumps fail during electrical outages (if gravity drainage to daylight is not possible).

The foundation wall should be damp-proofed and vapor-proofed on the exterior and a capillary break installed over the top of the footing to control “rising damp”. Capillary breaks over footings are not common as historically they were unnecessary when foundation perimeter walls were uninsulated and unfinished on the interior permitting inward drying.

A capillary break and vapor barrier should be located under concrete basement floor slabs. Coarse gravel acts as an effective capillary break and sheet polyethylene in direct contact with a concrete floor slab acts as an effective vapor barrier. The concrete slab should be sealed to the perimeter foundation wall with sealant (the concrete slab becomes the “air barrier”).

The granular drainage pad under the basement concrete slab should be vented to the atmosphere to control soil gas (Figure 3). Atmospheric air pressure changes are on the order of several hundred Pascal’s so that the soil gas vent stack is in essence a “pressure relief vent” or “soil gas bypass” to the atmosphere. Perforated pipe should be attached to the vent stack to extend the pressure field under the slab to the foundation perimeter. Pipe connections through the footing extend the pressure field further to the exterior perimeter drain (as well as providing drainage redundancy as previously noted).

The traditional approach to foundation water control has been to place the barrier and control layers on the outside and then allow drying to the inside. Drainage, damp-proofing or water-proofing and vapor control layers have historically been located on the outside of foundation perimeter walls and stone layers and plastic vapor barriers have been located under concrete slabs. The operative principle has been to keep the liquid and capillary water out of the structure and locate vapor barriers on the outside – and allow inward drying to the basement space where moisture can be removed by ventilation or dehumidification.

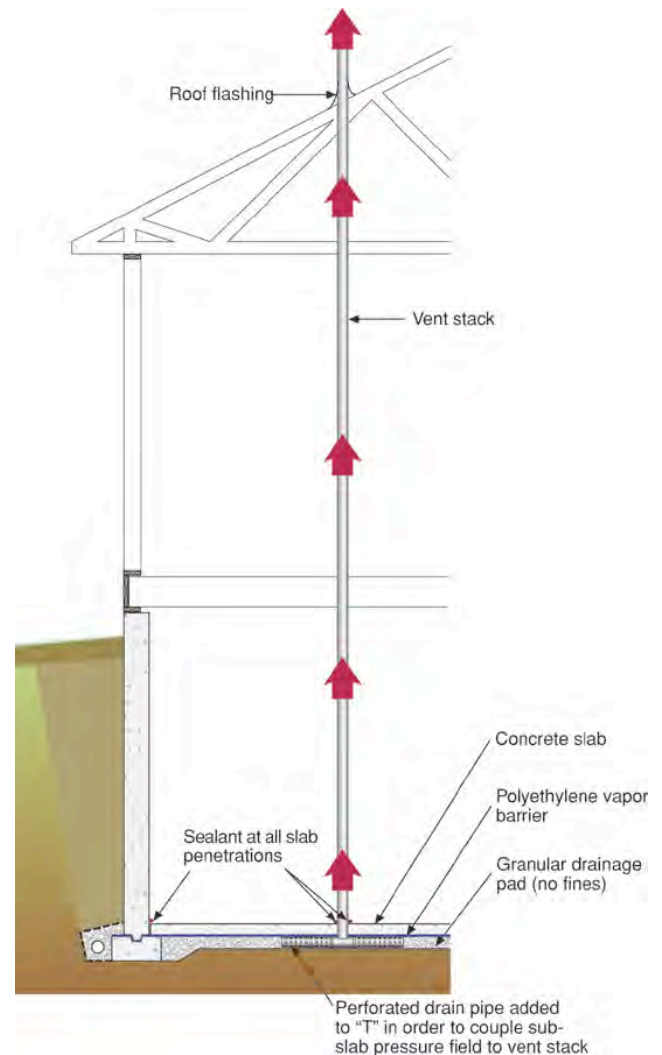
The traditional approach to foundation soil gas control has been to create pressure fields under and

around building foundations that are coupled to the atmosphere – intercepting the soil gas before it can enter the structure and providing a bypass or a pathway away from the conditioned space.

Figure 3

Traditional Approach to Foundation Water Control

- Sub-slab pressure field coupled to the atmosphere
- Avoid offsets or elbows in vent stack to maximize air flow



Insulating Foundations

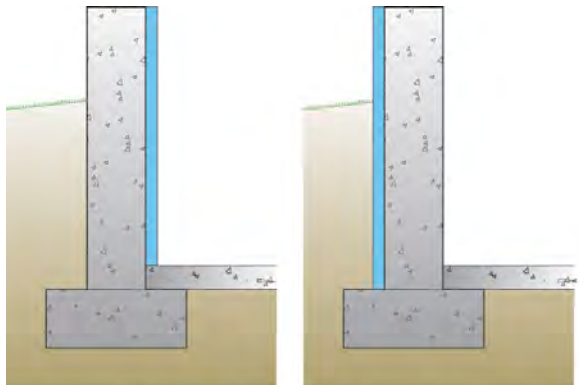
Comfort and energy costs have led to the necessity to insulate foundations. Heat loss from basements accounts for a significant portion of the total space-conditioning load – upwards of 20 percent (Timusk, 1981). In many jurisdictions, basement insulation is a building code requirement. Additionally, many homeowners with homes with basements finish the basement area for additional living

space. When they do, they typically insulate the perimeter walls. Homes with basements often end up with basement walls that are finished and insulated.

Figure 4

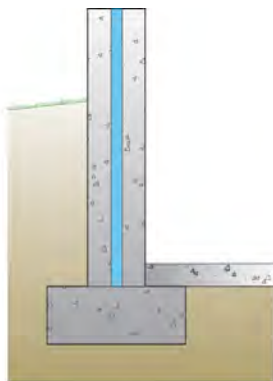
Generic Insulation Approaches

- Interior insulation most common, least expensive, has most moisture problems
- Exterior insulation best location from physics perspective, has practical problems with protection, thermal bridging and insects
- Insulation in middle is most expensive approach, has fewest moisture and insect problems, but is the most difficult to construct
- Insulation on both sides has similar problems to the exterior insulation approach with the additional cost of the interior layer

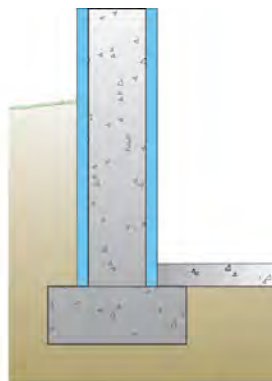


Internally Insulated Basement

Externally Insulated Basement



Basement Insulated in the Middle



Basement Insulated Both Externally and Internally

Four generic insulation approaches are possible: insulate on the inside, the outside, the middle or both sides (Figure 4). The most logical location from the physics perspective is to locate the insulation on the outside as in a commercial institutional wall assembly. By locating the insulation layer outward of the structure and outward of the water control layers the foundation is kept at a constant temperature and the insulation system does not interfere with the inward drying of the assembly. Exterior foundation insulation (Photograph 1) is completely compatible with the

traditional approach for foundation water control (described above).

Photograph 1

Exterior Foundation Insulation

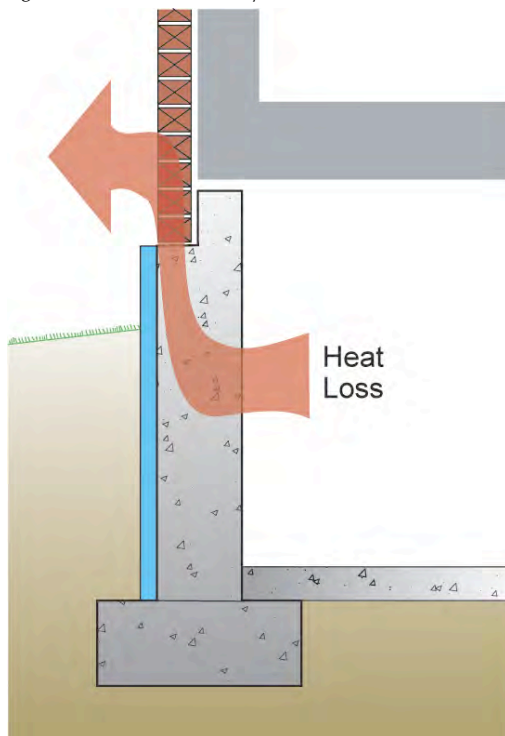
- Ideal location from the physics perspective
- Practical problems with protection, insect control and thermal bridging of brick veneers



Unfortunately, exterior foundation insulation can have significant application problems that often make it impractical to employ. The first is the difficulty in protecting the insulation layer during the construction process and subsequently during its useful service life. The cost of a protection layer often is more expensive than the insulation itself. The second is insect control. Exterior insulation can be an “insect interstate” that provides a direct pathway into the structure. Poisoning the insulation or the soil is often the only viable approach with exterior insulation as barriers (“termite shields”) have proven problematic (Lstiburek, 2004). Third is the problem of thermal bridging when brick veneers are used (Figure 5). There is no known practical cost effective solution to the thermal bridging brick veneer problem when exterior basement insulation is used. The heat loss is so severe as to almost negate the insulation layer (Timusk, 1981).

Figure 5
Brick Veneer Thermal Bridge

- Thermal bridge associated with brick veneer almost completely negates exterior insulation layer



These factors have led to looking at alternative approaches to basement insulation – primarily locating insulation layers on the interior. Unfortunately, locating insulation layers on the interior often conflicts with the traditional approach of foundation water control – namely inward drying. Constructing frame walls, insulating the resulting cavity and covering with an interior plastic vapor barrier is common (Photograph 2) and often leads to odor, mold, decay and corrosion problems (Fugler, 2002; Ellringer, 2002). Also common, and prone to similar problems, is the use of “blanket insulation” often derisively referred to as “the diaper” for the odor problems associated with the approach (Photograph 3).

Problems that interior insulation systems have to overcome are numerous:

- Groundwater entry (Figure 6)
- Moisture of construction (Figure 7)
- Capillary rise through footing (Figure 8)
- Condensation from interior air leakage (Figure 9)

Most interior insulation systems are constructed with moisture sensitive materials (i.e. fiberglass batts or blankets) and are unable to tolerate even

Photograph 2
Interior Frame Wall with Plastic Vapor Barrier

- Plastic vapor barrier prevents inward drying
- Common outcome are odor, mold, decay and corrosion problems



Photograph 3
“Blanket Insulation”

- AKA “the diaper”
- Plastic film on interior of blanket insulation prevents inward drying



minor groundwater leakage, therefore requiring builders to be “perfect” in controlling groundwater – an impossible requirement. These systems also can prevent inward drying (i.e. when they are covered with plastic vapor barriers). This is an issue with moisture of construction, capillary rise and ground water leakage.

Simply leaving off interior vapor barriers or vapor retarders will not work due to the issues associated with interior basement moisture migration outwards via vapor diffusion.

Additionally, most interior insulation systems are not airtight thereby allowing interior air to access the interior surfaces of the perimeter concrete foundation.

Figure 6
Groundwater Entry

- Interior insulation layer is typically water sensitive and prevents inward drying

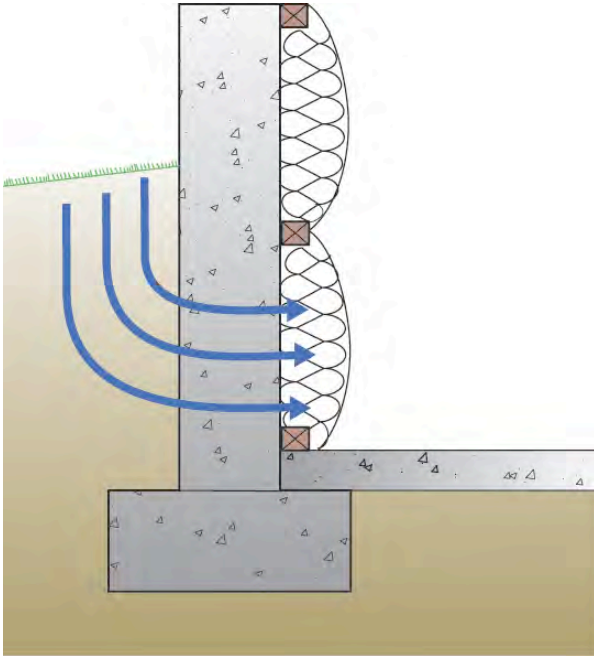


Figure 8
Capillary Rise Through Footing

- Interior insulation layer is typically water sensitive and prevents inward drying

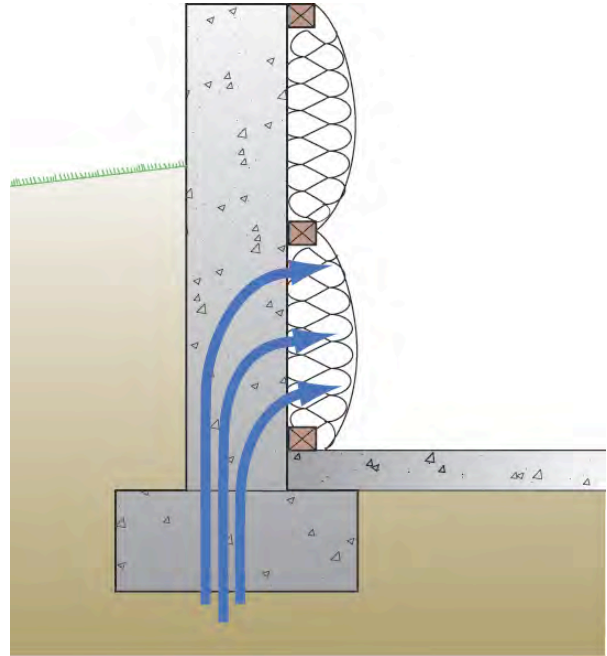


Figure 7
Moisture of Construction

- Interior insulation layer is typically water sensitive and prevents inward drying
- Several thousand pounds of water in freshly placed concrete attempts to dry inward

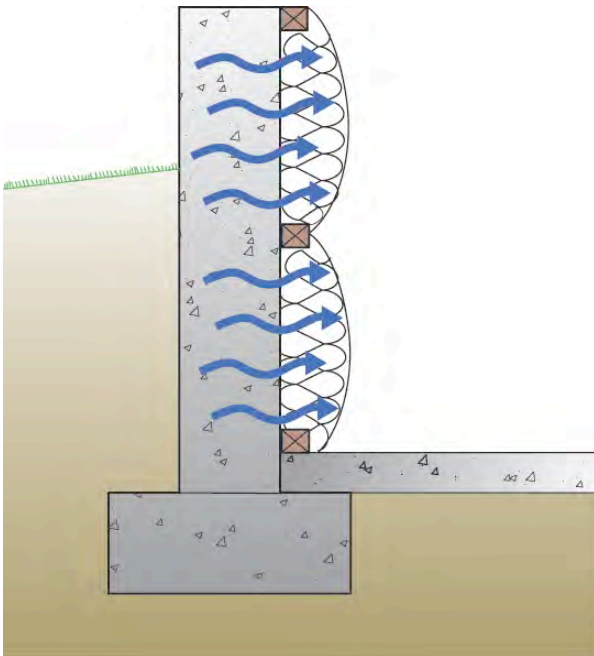
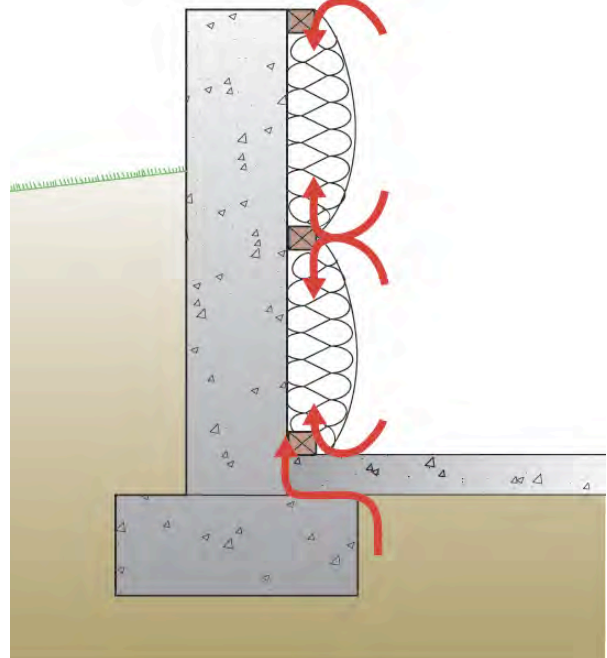


Figure 9
Condensation From Interior Air Leakage

- Interior insulation layer is typically not airtight and does not prevent interior air from condensing on concrete foundation wall
- Soil gas often enters assembly at concrete slab-perimeter wall interface leading to condensation

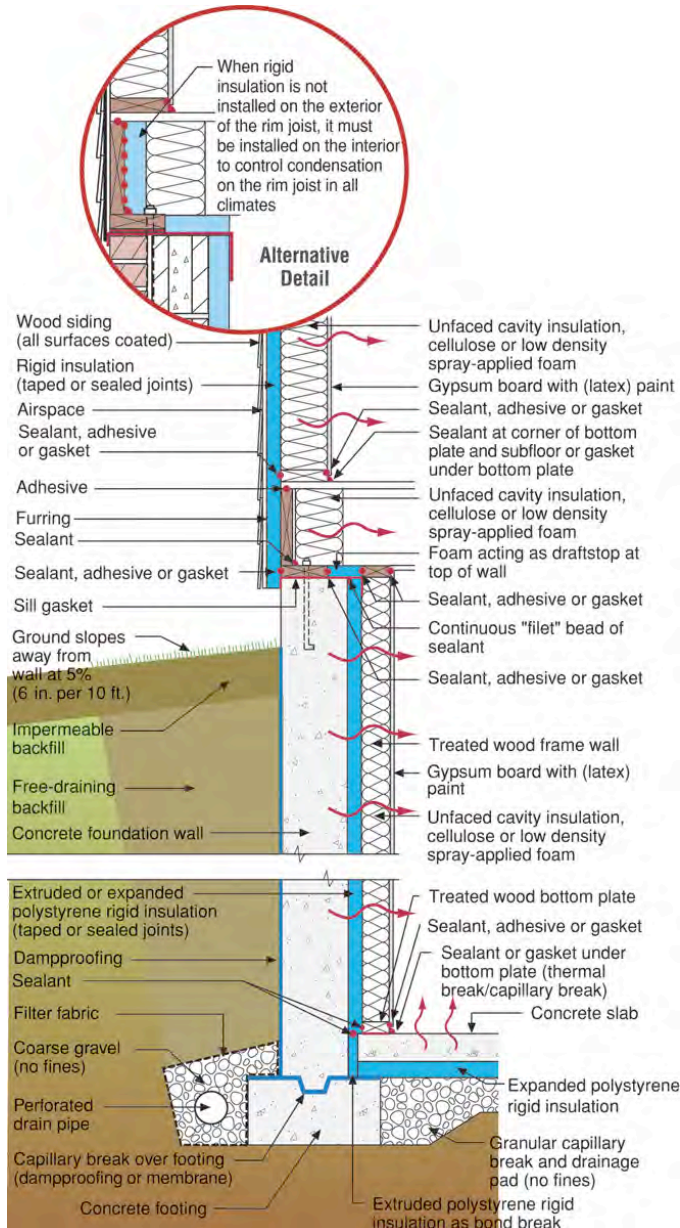


The structural elements of below grade walls are cold (concrete is in direct contact with the ground)—especially when insulated on the interior. The

main problem with below grade walls comes during the summer when warm moist air

Figure 10
Rigid Insulation/Frame Wall

- Cold concrete foundation wall must be protected from interior moisture-laden air in summer and winter
- Rigid insulation continuous behind wood frame wall
- Rigid insulation is vapor semi-impermeable or vapor semi-permeable (foil facing or plastic facing not present)
- Wood frame wall cavity to be insulated with unfaced fiberglass or damp spray cellulose
- No interior vapor barrier installed



comes in contact with basement cold surfaces. Of particular concern are rim joist areas – which are cold not only during the summer but also during the winter (Goldberg & Huelman, 2000).

Basement walls should be insulated with non-water sensitive insulation that prevents interior air from contacting cold basement surfaces – the concrete structural elements and the rim joist framing. The best insulations to use are foam based and should allow the foundation wall assembly to dry inwards. The foam insulation layer should be vapor semi impermeable (greater than 0.1 perm), vapor semi permeable (greater than 1.0 perm) or vapor permeable (greater than 10 perm). The greater the permeance the greater the inward drying and the lower the moisture risk. Additionally, a capillary break should be installed on the top of the footing between the footing and the perimeter foundation wall. No interior vapor barriers should be installed.

Up to two inches of unfaced extruded polystyrene (R-10), four inches of unfaced expanded polystyrene (R-16), three inches of closed cell high density spray foam (R-21) and ten inches of open cell low density spray foam (R-35) meet these permeability requirements.

The most cost effective approach involves a combination of rigid insulation and a frame wall assembly (Photograph 4, Figure 10 and Figure 11). The least risky interior insulation assemblies from an installation perspective and water sensitivity and drying perspective utilize spray foam – either closed cell or open cell (Figure 12).

Basement floor slabs are best insulated underneath with rigid insulation. A sheet polyethylene vapor barrier should be located over the rigid insulation and in direct contact with the concrete slab. A sand layer should never be installed between the sheet polyethylene vapor barrier and the concrete slab. Such sand layers can become saturated with water and are unable to dry downwards due to the sheet polyethylene vapor barrier. Only drying upward is possible and typically results in damaged interior floor finishes (Lstiburek, 2002).

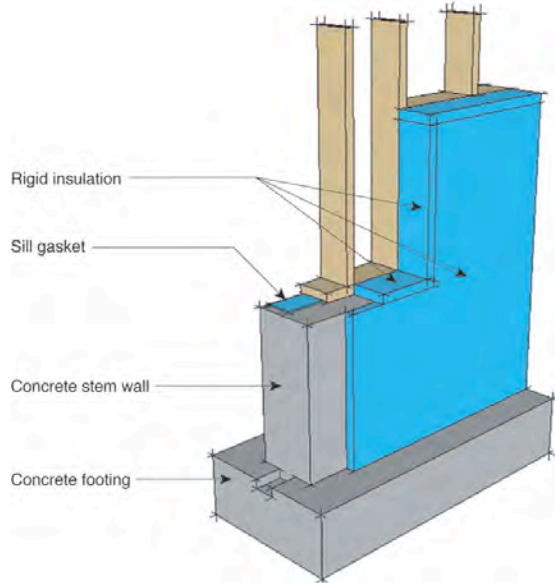
Impermeable interior floor finishes such as vinyl floor coverings should be avoided – as should impermeable interior basement wall

finishes such as oil (alkyd) paints and vinyl wall coverings.

Figure 11

Rigid Insulation Wraps Exposed Concrete

- Cold concrete foundation wall must be protected from interior moisture-laden air in summer and winter
- Rim joist assembly must be insulated with air impermeable insulation
- Rigid insulation completely wraps exposed concrete preventing interior air from contacting potential concrete condensing surface
- Rigid insulation is vapor semi-impermeable or vapor semi-permeable (foil facing or plastic facing not present)



Photograph 4

Rigid Insulation/Frame Wall Under Construction

- Rigid insulation continuous behind wood frame wall
- Rigid insulation is vapor semi-impermeable or vapor semi-permeable (foil facing or plastic facing not present)
- Wood frame wall cavity to be insulated with unfaced fiberglass or damp spray cellulose
- No interior vapor barrier installed



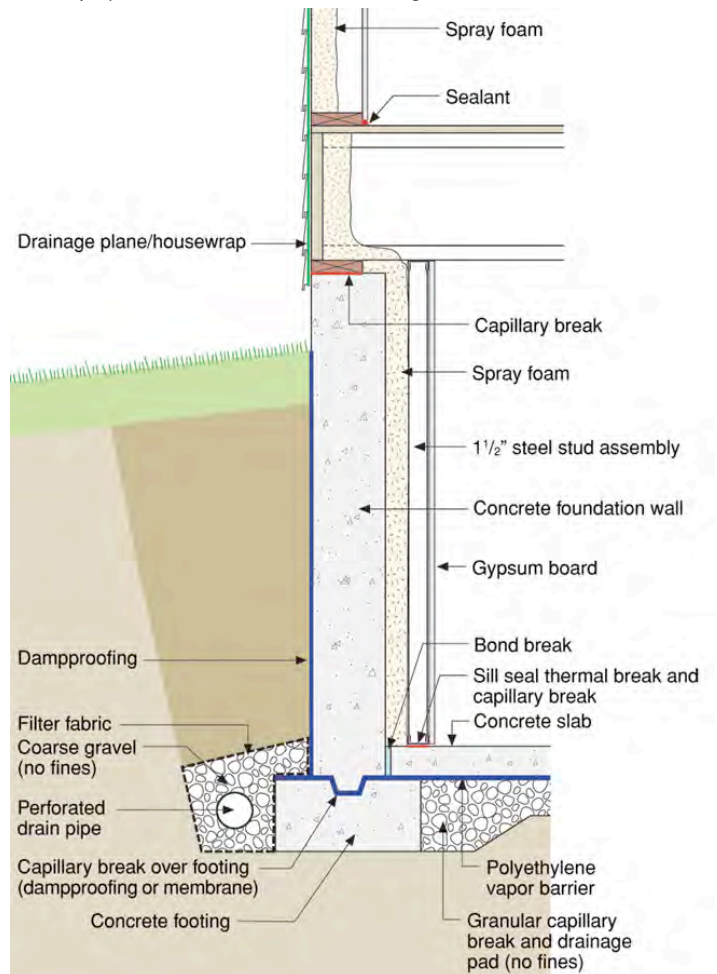
Conclusions

Liquid and capillary water should be kept out of the foundation assembly using surface drainage, below grade drainage and capillary breaks. Vapor barriers should be located on the exterior of foundation assemblies allowing inward drying to the basement space where moisture can be removed by ventilation or dehumidification.

Figure 12

Interior Spray Foam

- Least risky interior insulation approach
- Cold concrete foundation wall must be protected from interior moisture-laden air in summer and winter
- Rim joist assembly must be insulated with air impermeable insulation
- Interior air cannot access concrete condensing surface or rim joist condensing surface due to spray foam layer
- Spray foam insulation layer is vapor semi-permeable permitting inward drying
- Spray foam must be covered with fire/ignition barrier



Soil gas should be controlled by locating pressure fields under and around building foundations that are coupled to the atmosphere – intercepting the soil gas before it can enter

the structure and providing a bypass or a pathway away from the conditioned space.

If foundation systems are designed and constructed to dry to the interior – regardless of where insulation layers are located – interior vapor barriers should be avoided. This precludes interior polyethylene vapor barriers installed over interior frame wall assemblies or any impermeable interior wall finishes such as vinyl wall coverings or oil/alkyd/epoxy paint systems.

If an interior insulation layer is used interior air should be prevented from reaching the concrete structural wall assembly or rim joist assembly (unless insulated on the exterior) in any significant volume. Rigid foam systems or spray-applied foams are recommended for this purpose.

Materials in contact with the foundation wall and the concrete slab should be moisture tolerant - the materials should not support mold growth or deteriorate if they become wet.

References

Ellringer, P.; “Minnesota Mold Busting”, Home Energy Magazine, June 2002.

Fugler, D.; “Dry Notes From The Underground”, Home Energy Magazine, April 2002.

Goldberg, L. and P. Huelman; “Rim Joist Report and Foundation Insulation Project Final Report”, Minnesota Department of Commerce, University of Minnesota, June 2000.

Lstiburek, J.; “Builders Guide to Cold Climates”, Building Science Press, September 2001.

Lstiburek, J.; “Investigating and Diagnosing Moisture Problems, ASHRAE Journal, December 2002.

Timusk, J.; “Insulation Retrofit of Masonry Basements”, Department of Civil Engineering, University of Toronto, 1981.